



SOUTH COAST ENVIRONMENT SOCIETY

Appropriate Technology

Our Appropriate Technology series covers useful projects using reused materials and natural energies to cook, dehydrate, generate electricity and collect rainwater.



www.sces.org.nz

COB OVEN

Do you like pizza? Wood fired smokey flavours enjoyed with friends? Cob ovens are great community builders because mixing cob with many feet is the best and most fun way to make it. What is cob? And what else can it be used for. If you and a group want to build an oven, several workshop sessions will be needed.



OFF GRID SOLAR

In this course you will learn how to plan and create a solar photovoltaic system - from small scale and up. We will cover sun angles and positioning, sizing of panels and batteries, and inverting to 240V if needed.



RAINWATER HARVESTING

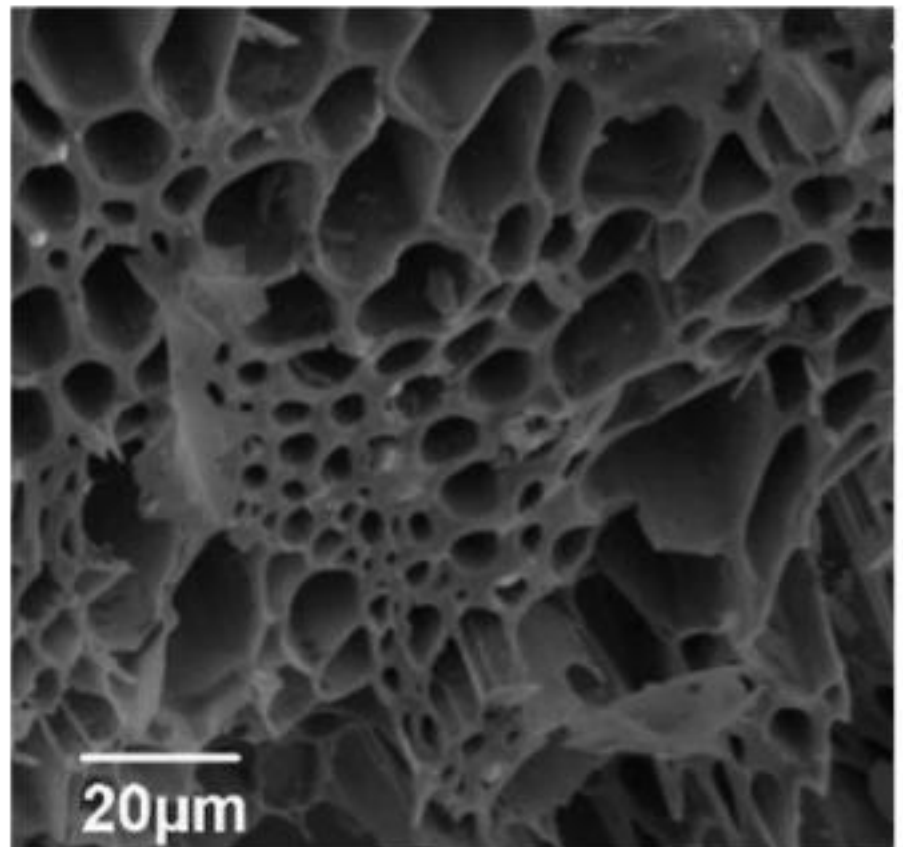
The ultimate in being prepared is having a way to collect and store water collected off structures. Learn about the ins and outs of harvesting this precious resource and how to ensure it is safe to drink and bath in.



BIOCHAR

Do you keep hearing the word biochar? Come and learn all about this incredible soil amendment and how it will improve your soil for hundreds of years!

It is easy to make at any scale from easy to source waste biomass.



THERMAL COOKING



Learn how to save energy by slow cooking using an insulated box. What insulation materials can be used? What foods can be cooked in this way?

ROCKET STOVE

Build an efficient and clean burning stove to cook on. Use reclaimed materials and sticks or waste wood to fuel it.



SOLAR DEHYDRATOR

Learn how you can preserve fruits, meat, and so on using the energy from the sun. Discussion of what the best reuse options are in terms of construction materials.



FOOD STORAGE

You or your friends have grown some amazing food, but more than you eat and give away - learn how to safely and effectively store this abundance by various methods.



GREEN HOUSE

You will learn to make a green or hot house to give season extension to your growing. We will show you how to orient the structure to optimise plant growth, collect rainwater from it, and options for controlling the inside climate.





ABOUT OUR TUTORS

Our tutors have long experience in using these skills. They share the ways you can also save money by living more simply and using natural or reclaimed materials.

DETAILS

Single workshops take one and a half hours; The cost is \$15pp (per workshop). Minimum numbers required to run a workshop. Bookings for groups are welcome. Note: a 25% discount applies for community service card holders.

THANK YOU TO OUR MAIN SUPPORTERS



CONTACT US

Ph 234 8717, info@sces.org.nz, www.sces.org.nz